

Today's Take-Aways

Human Resources

- The hospital is gathering information based on the Ministry criteria guidelines for pandemic pay and will be submitting a report to the LHIN (Local Health Integration Network) on July 13th for review and approval. At this point in time, it is unclear when the pandemic pay payment from the LHIN will be issued to the hospital. Once received, PRH will allocate those monies to the positions which meet the Ministry's eligibility criteria.

We continue to acknowledge the contributions of all of our staff and the additional work they have done in this unprecedented time.

Clinical News

- Enhanced Masking Protocols, Mask Requirements for Patients:

As the COVID-19 situation continues to evolve, so do the practices at PRH and other hospitals. At this time, we will be introducing universal masking for inpatients.

Patients admitted to PRH will now be required to wear a mask when in public spaces and when leaving their inpatient room (for example, when going for a test in another department).

Masking for admitted patients depends on many factors including, ability, safety, and/or medical conditions. Patients should be encouraged to wear a mask when outside of their rooms, but consideration for individual circumstances is necessary.

- The Visitor Policy on the Maternal Child Care unit is being amended effective today to allow the single, designated support person in and out privileges. This is being done in alignment with other hospitals in our region and in alignment with our Visitor Policy for other units which allows for in and out privileges.

- Our clinical services continue to ramp up on a gradual basis. Here is a summary of some of the latest developments:

Surgical – We have resumed elective surgery at 50 percent capacity guided by patient acuity and wait time. We have not implemented paediatric dental surgery or cataract surgery at this time, however we will be resuming these services in our next phase of opening which should be around mid-July providing the current phase remains successful.

Diagnostic Imaging – We are increasing outpatient activity for MRI, CT, Ultrasound, Mammography, and Radiology while maintaining safe physical distances. We are currently operating at approximately 72 percent of our normal activity.

Outpatient Rehab - Cardiac Rehab restarted last week along with Outpatient Physio. This week saw the return of our Community Physiotherapy Clinic. Other than that, it is business as usual.

Today's Take Aways...Continued From Front

• We have been informed that there is a global shortage of the dual swab MRSA collection kit. Once our internal stock is depleted, we will transition to an alternative collection process. There are two components for the alternate collection process, an "Amies Swab Collection Kit" for rectal/ groin swab and a "Single E Swab Kit" for nasal swab. Visual instructions will be available on each clinical unit and teaching will be provided.

TEMPORARY MRSA SWAB PROCESS CHANGE



Amies Swab Collection Kit + single E Swab Kit



Amies Swab Collection Kit – Use only swab portion of kit. Swab rectal/groin area. Insert swab into white E Swab tube (accompanying kit). Swish swab in liquid and then discard swab.



Single E Swab Kit – After rectal/groin swab has been obtained, proceed to obtain nasal swab. Insert swab into fluid, break off swab at scored line. Secure cap on tube and send to lab.



Here's a treat we haven't offered yet, and it's packaged well for bulk pick-up! Staff Association members who would like July's treat will receive two 3oz containers of Pickle Vixens Dip (Dilly Dip & Roasted Red Pepper) and a bag of pretzels.

Dips require refrigeration.

Please check that those you are picking up for want it.

PRH Staff Association Treat of the Month Monday, July 6th, 2-4 p.m. in The Lunch Box

PLEASE RESPECT COVID-19 MEASURES

1. To minimize numbers in the cafeteria, please, where possible, send a representative to get the Dip & Pretzels for your group.
2. To minimize the time spent in the cafeteria with others, if possible, please email a list of those SA members from your area who would like Dip & Pretzels to carolyn.levesque@prh.email by 12 p.m. on July 3rd. When you arrive on July 6th, just confirm that your list was received and the numbers match up.



Too Much, Too Little, Just Right: Ethical Dilemmas about Visitor Policies

Tuesday, July 7, 2020 from 12:00 pm – 1:00 pm
with Dr. Hazel Markwell

Tower C, Boardroom, C142 will be available for
staff and physicians to join in person,
with physical distancing in place.

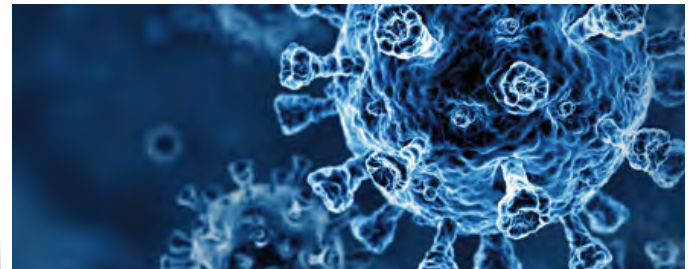
Dr. Markwell will be joining via Zoom.

Zoom link for staff and Physician's to join virtually:

<https://us02web.zoom.us/j/88313324948?pwd=R2tja mg3KzUyWCt3SXlPbz dVOXlPZz09>

Facts and Figures

- There are currently no COVID positive patients in our care at PRH.
- Renfrew County has now had a total of 26 COVID positive cases (23 are now resolved), and one death. To date, 14,159 people have been tested. For the latest Renfrew County information on COVID-19, please visit www.rcdhu.com.
- In Ontario, there have been 35,370 confirmed cases of COVID-19 and 2,680 deaths. To date, a total of 1,457,703 people have been tested and remain under investigation. For provincial statistics, visit www.ontario.ca.



Everyone Helped Make Annual PRH Staff Appreciation BBQ A Success!

A HUGE THANK YOU to our Food Services team for their assistance with today's Staff Appreciation BBQ! Thanks to their organization and execution, everything ran smoothly!

Also thanks to Lynn Thomas, Gregg Thomas and Elena Krieger of Harvey's Pembroke who were able to keep the burgers and chicken stocked and ready for distribution. A total of 299 burgers and 175 Chicken breasts were served up! It was great that they were able to easily adapt to the COVID-19 safety measures and enable us to go forward with this annual event!

And finally, thanks to all PRH health care team members who respected the safety measures, sent runners etc. All of this enabled everyone to enjoy a great meal while keeping everyone safe!



Thanks also to the Maintenance department for preparing the hospital's two BBQs so that Harvey's staff could do some of their cooking onsite and for quickly setting up the propane tanks when needed.



JULY – AUGUST – SEPTEMBER

PRH is hosting a...

VIRTUAL VACATION!

The Wellness and Recognition committee is spearheading some FUN activities, along with wellness reminders and resources throughout the summer months. As we embark on this Virtual Vacation, we'll support each other and get some much-needed R&R (Restoration and Resilience).

Follow Fern July 6- August 28

Fern is kicking off our campaign July 6th as we **collectively travel** around the world.

'Clock-in' all of your distances as you enjoy any type of physical activity where distance can be tracked.

Every Friday starting July 10th submit your travels to us!

The more kilometres we track, the more we help Fern travel and experience the world!

Stay tuned for updates with Fern's travel journal!
Submit your weekly total on **The Loop** or through celebration&recognition@prh.email

Upcoming events:

Virtual Scavenger Hunt
July 15 - July 31



Giving to our Community
July 15- August 7



PRH Together
July 28



This week's Wellness Resource:
Employee Assistance Program 1-844-880-9142 / www.worklifehealth.com