

Today's Take-Aways

Regional Updates

- At the regional level, there is currently lots of discussion around bed capacity planning and planning for what could be a second wave of COVID-19 this fall or winter. Hospitals will be looking at how to address a potential second wave based on lessons learned during the last several months.
- With plans to open up, in some form, daycares and schools this fall, it is anticipated that there may be more demand for paediatric COVID-19 testing. There are currently discussions taking place about this at the regional level to determine how that could be facilitated.
- We are in the process of reviewing The Ottawa Hospital's latest Visitor Policy which has been adopted as a standard for the Champlain Health Region to see if we need to make further changes to our own.

Human Resources

- All deployed staff have returned to PRH except for an RPN who remains at Riverview Heights for a little while longer. PRH is exploring the potential development of a service agreement with Marianhill and Riverview Heights to provide nursing services during the summer months. A regional task force is also conducting a debrief on the assistance hospitals have provided to long-term care and retirement homes in order to determine what worked well and how things could be improved if assistance was required again.
- A lot of behind-the-scenes work has been done over the past week by the management team in order to prepare the Pandemic Pay report for the LHIN (Local Health Integration Network) which is due on July 13th. It remains unclear when the pandemic pay payment from the LHIN will be issued to the hospital. Once received, PRH will allocate those monies to the positions which meet the Ministry's eligibility criteria.
- During the period from March 17, 2020 – June 30, 2020, the hospital was following the directives from Ontario Health that all staff on self-isolation with suspected or confirmed cases of the virus, regardless of job status, were coded "PAND", which is a paid sick leave code for all pre-scheduled shifts. Ontario Health recommendations and guidelines have since changed. Effective June 30, 2020, any absences or staff on self-isolation with a suspected or confirmed case, will defer to the normative hospital sick pay policies and/or collective agreement provisions.

PPE Status

- There are currently some supply issues with Nitrile gloves. In addition, we have received notice that N95 mask shipments from the US won't be made as frequently as anticipated due to increased demand for that product in the US and Latin America.

Today's Take Aways...Continued From Front

Clinical News

- Our clinical services continue to ramp up on a gradual basis. Here is a summary of some of the latest developments:

Diagnostic Imaging - continues to ramp up all services while maintaining safe physical distancing, and is currently operating at 81% of normal capacity.

Emergency Department – has experienced a slight rise in the number of visits (now at approximately 70-80% of pre-COVID numbers) with admission numbers similar to pre-COVID which is indicative that those visiting the ED are presenting with higher acuity. All monitors in the department are now portable which is allowing for an increase in capacity.

Acute Mental Health – group sessions are being gradually ramped up with masking for all participants and physical distancing. The department continues to be below pre-COVID levels.

Mental Health Services of Renfrew County – continuing to gradually expand the Outreach program beyond small groupings. The program is also reintroducing some face-to-face appointments while maintaining virtual visits as required.

Operating Room – gradual ramp-up of services is going well – currently running two ORs and Endoscopy is open.

Ambulatory Clinics – gradually reintroducing more onsite services. In the third week of July this will include return of treadmill stress tests. Geriatric Day Hospital, Stroke Prevention Clinic, Respiriology Clinic and Diabetes Clinics are still doing follow-ups by phone.

- Please note that the staff swabbing location for COVID-19 testing has been moved from the Tower C parking lot to the Tower D parking lot while construction continues on the Rehab deck/roof.

PRH Foundation

- During the unprecedented times of COVID-19, the staff at Pembroke Regional Hospital continue to work hard to safeguard the health of our community. In response to overwhelming community support for frontline and essential workers at PRH, on June 1st PRHF launched a month-long campaign to raise funds to celebrate and recognize the hospital's 775 staff and 90 physicians with a commemorative Health Care Hero pin. With the amazing support of our community... WE DID IT, together we met our goal.



During the week of July 13th, the pins and cards of thanks will be delivered to all managers for distribution. Personalized messages from our community to our staff and physicians will also be on display on the PRHF bulletin board in the staff corridor (2nd floor, Tower B). As well, on July 16th at 1:30 p.m. we invite available staff and physicians (on or off shift) to join us for a group photo (masks required). This will take place outside of the Emergency Department, Tower B. Hope to see you all there.

Miscellaneous

- A reminder that the PRH Auxiliary is once again managing the TV rental service for new admissions. During the first few months of the pandemic, the Auxiliary generously waived the fee for our patients. In order to assist with the restart of this program, staff are reminded to turn off/disconnect the TVs when a patient is discharged. All monies collected from TV rentals support PRH in its equipment purchases. In 2019 alone, \$25,825.19 was raised through TV rentals.

- Food Services is continuing its introduction of new features in the Lunch Box. Next week Tuesday's hot meal special will be chili and Wednesday's feature wrap will be Greek!

PRH Supply Status

Items targeted during Pandemic	Total Stock
N95 Respirators 1860	1,409
N95 Respirators 1860S	2,642
N95 Respirators 1870+	169
N95 Respirators 1804	3,930
N95 Respirators 1804 s	3,333
N95 Respirators 9105	236
N95 Respirators 8110s	354
N95 Respirators 8210	2,188
N95 Respirators 9210+	117
Mask isolation (ear loop no visor) Level 1	8
Mask isolation (with tie no visor) Level 1	3,820
Mask isolation (ear loop no visor) Level 2 (Trico)	82,827
Mask isolation (ear loop no visor) Level 3	1,100
Mask visor ear loop Level 3	5,554
Mask visor with tie Level 3	1,078
Gowns Isolation - Level 1	4,000
Gowns Isolation - Level 2 XLg Yellow	4,668
Gowns Isolation - Level 3	840
Gowns Isolation - Level 4	620
Gown - Chemo	480
Full face shield with velcro strap	2,101
Goggles - vented	499
Safety goggles (over glasses)	728
Safety glasses	1,396
Latex-Free Gloves Small - each (vinyl) 13.6%	73,350
Latex-Free Gloves Medium - each (vinyl) 48.3%	115,350
Latex-Free Gloves Large - each (vinyl) 36.1%	69,450
Latex-Free Gloves X-Large - each (vinyl) 1.9%	7,670
GLOVE NITRILE SMALL	18,210
GLOVE NITRILE MEDIUM	16,100
GLOVE NITRILE LARGE	28,700
GLOVE NITRILE X-LARGE	19,100
GLOVE 12" SMALL NITRILE	1,550
GLOVE 12" MEDIUM NITRILE	1,150
GLOVE 12" LARGE NITRILE	4,900
GLOVE 12" XL LARGE NITRILE	250
Shoe Cover	1,950
Hand Sanitizer 500ml	272
Hand Sanitizer 1000ml	19
Disinfecting Wipes (Accel)	194
Expired N95 1860S	680
Expired N95 1870	1,880
Expired N95 8110s	415
Expired N95 8210	2,429
Expired N95 9210	160
Expired N95 Other	1,705
*Concerns about Supply	

Facts and Figures

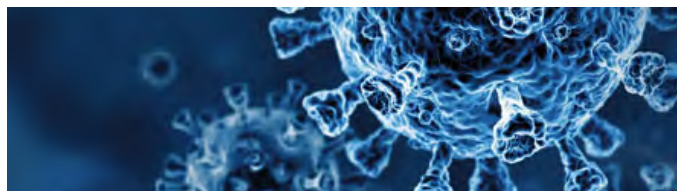
- There are currently no COVID positive patients in our care at PRH.
- Renfrew County has now had a total of 27 COVID positive cases (24 are now resolved), and one death. To date, 14,757 people have been tested. For the latest Renfrew County information on COVID-19, please visit www.rcdhu.com.
- In Ontario, there have been 36,178 confirmed cases of COVID-19 (31,805 are now resolved) and 2,700 deaths. To date, a total of 1,582,361 people have been tested. For provincial statistics, visit www.ontario.ca.

Free Popcorn For All

As another gesture of kindness from the community, COGECO-ONTARIO has donated 900 bags of Shriner's Creek Kettle Popcorn for all members of our health care team!

These are being distributed to staff and physicians this week.

As a Thank You to COGECO, please consider taking some photos of you and your co-workers with your treats and send them to celebration&recognition@prh.email.



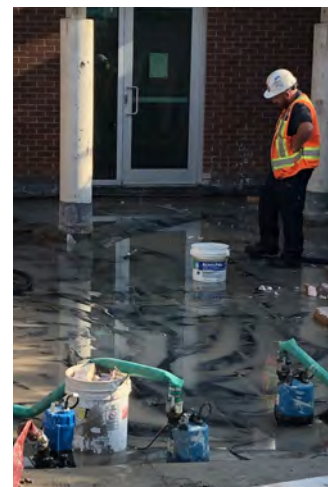
CONSTRUCTION CORNER

The Rehab deck/roof project is in progress. The concrete structures have been demolished and removed. Approximately 50% of the concrete deck has been removed. Blocked drains have been causing some issues with water infiltrating into the building below, especially in the CT area. The drains will be cleaned out later this week.

The renovation work on the Tower A 4th floor West Wing is almost complete.

We are awaiting fibre optic cabling to connect the IT phone and data for the offices before relocating staff.

Housekeeping is planning to do a major clean up and waxing of the floors over the weekend.



VIRTUAL VACATION

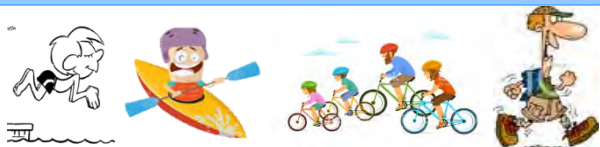
Bulletin Update

We can't always control what happens to us, but we can choose how we respond, and in that, you will be mastering change – Brian Tracy

"Bouncing Back"

Resilience is being able to turn towards your personal strengths to transform difficult or challenging experiences into learning opportunities.

Being resilient doesn't protect you from stress and anxiety, but it can provide you with better ways to respond so that you are able to face, overcome and be personally transformed by adversity. Resilience is a journey and each person will take their own time along the way. Resilience factors help you draw from personal strengths. Factors include: **Trust, Identity, Independence, Support Systems, Initiative/Problem Solving Skills**. Take a moment to reflect to develop an achievable plan. It will help you prepare, live through and learn from a difficult situation.



Follow Fern July 6- August 28

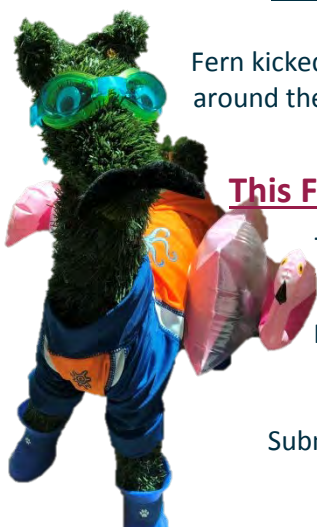
Fern kicked off our campaign July 6th as we **collectively travel** around the world. 'Clock-in' all of your travelling distances as you enjoy any type of physical activity.

This FRIDAY July 10th start submitting your Km's!

The more kilometres we track, the more we help Fern travel and experience the world!

How you move is up to you – stay tuned for Fern's travel journal!

Submit your distances on **The Loop** or by email:
celebration&recognition@prh.email



We're taking **I Spy** to the next level, and announcing the launch of an organization-wide scavenger hunt on...

Wednesday July 15th

We will be providing a key word within a wellness message to spell out with items found in your departments and work environments.

Find an item related to the letter AND snap a photo! Submissions will be shared.

The **hunt** will take place over a two week period from July 15 – July 31st



Upcoming Events!

Giving to our Community
July 15- August 7



PRH Together
July 28



This week's wellness resource - Garry Engler, Spiritual Care Coordinator, is available for confidential support in person in the Spiritual Care office, by phone at extension 6264 or by email at garry.engler@prh.email.